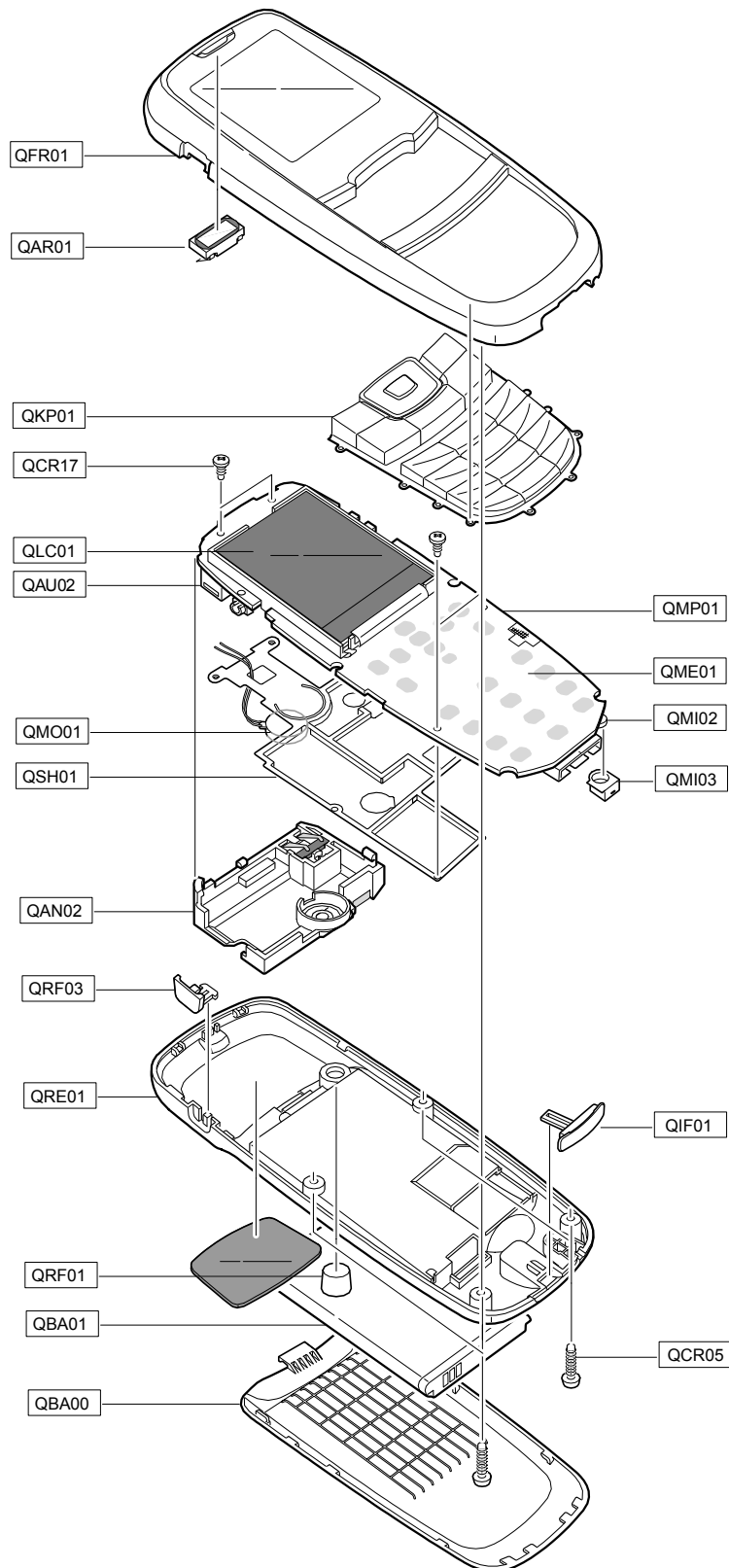

3. SGH-C120 Exploded View and Parts List

3-1. Cellular phone Exploded View

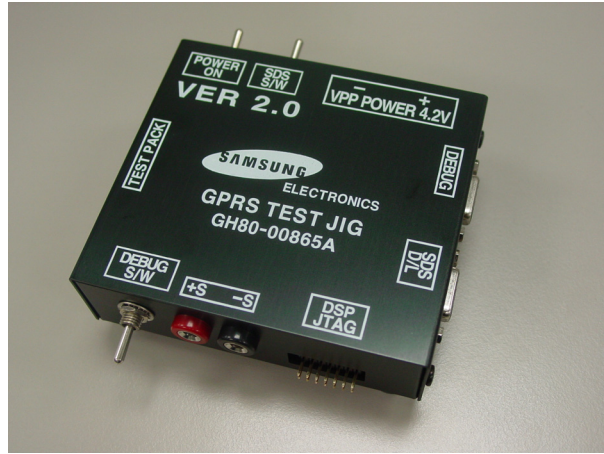


3-2. Cellular phone Parts list

Location No		Description	Sec Code
QAN02		ANTENNA-SGHC120,GRAY	GH42-00651A
QAR01		AUDIO-RECEIVER	3009-001145
QAU02		RMO-BUZZER HOLDER V2	GH73-05637A
QBA00		PMO-BATT COVER	GH72-24322A
QBA01		BATTERY-800MAH,BLK,ENG,M	GH43-01850A
QCR05		SCREW-MACHINE	6001-001478
QCR17		SCREW-MACHINE	6001-001460
QFR01		MEC-FRONT COVER	GH75-07865A
QIF01		PMO-IF COVER	GH72-24321A
QKP01		MEC-KEYPAD(FAM/WKS)	GH75-07866A
QLC01		LCD-MODULE,SGHC120	GH07-00772A
QME01		UNIT-METAL DOME	GH59-02424A
QMI02		UNIT-MIC ASS`Y	GH59-00595A
QMI03		MEC-MIC HOLDER	GH75-07869A
QMO01		MOTOR DC-SGHE720	GH31-00136A
QMP01		PBA MAIN-SGHC120	GH92-02344A
QRF01		RMO-RF COVER	GH73-05308A
QSH01		MEC-SHIELD CAN REAR	GH75-07868A
QRE01		MEC-REAR COVER	GH75-07867A
	QRF03	PMO-EAR COVER	GH72-24320A

Description	Sec Code
BAG PE	6902-000297
CHARGER-SGHN288 TA(U.K)	GH44-00171C
LABEL(P)-WATER SOAK	GH68-02026A
MANUAL-USER	GH68-07911A
LABEL(R)-MAIN (EU)	GH68-08401A
BOX(P)-UNIT MAIN (SEA)	GH69-03312B
CUSHION-CASE TA3	GH69-03332A
MPR-SPONGE SPEAKER	GH74-02589A
MPR-TAPE ESD	GH74-18148A
MPR-TAPE J_TAG SHORT	GH74-18149A

3-3. Test Jig (GH80-00865A)



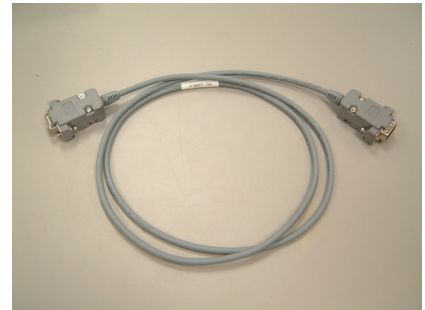
3-3-1. RF Test Cable
(GH39-00397A)



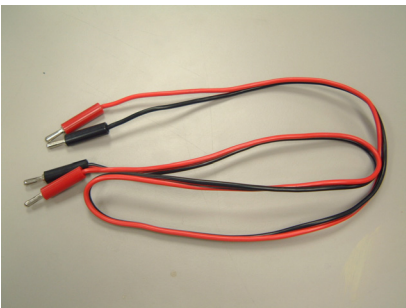
3-3-2. Test Cable
(GH39-00127A)



3-3-3. Serial Cable



3-3-4. Power Supply Cable



3-3-5. DATA CABLE
(GH39-00159A)



3-3-6. TA
(GH44-00184A)

